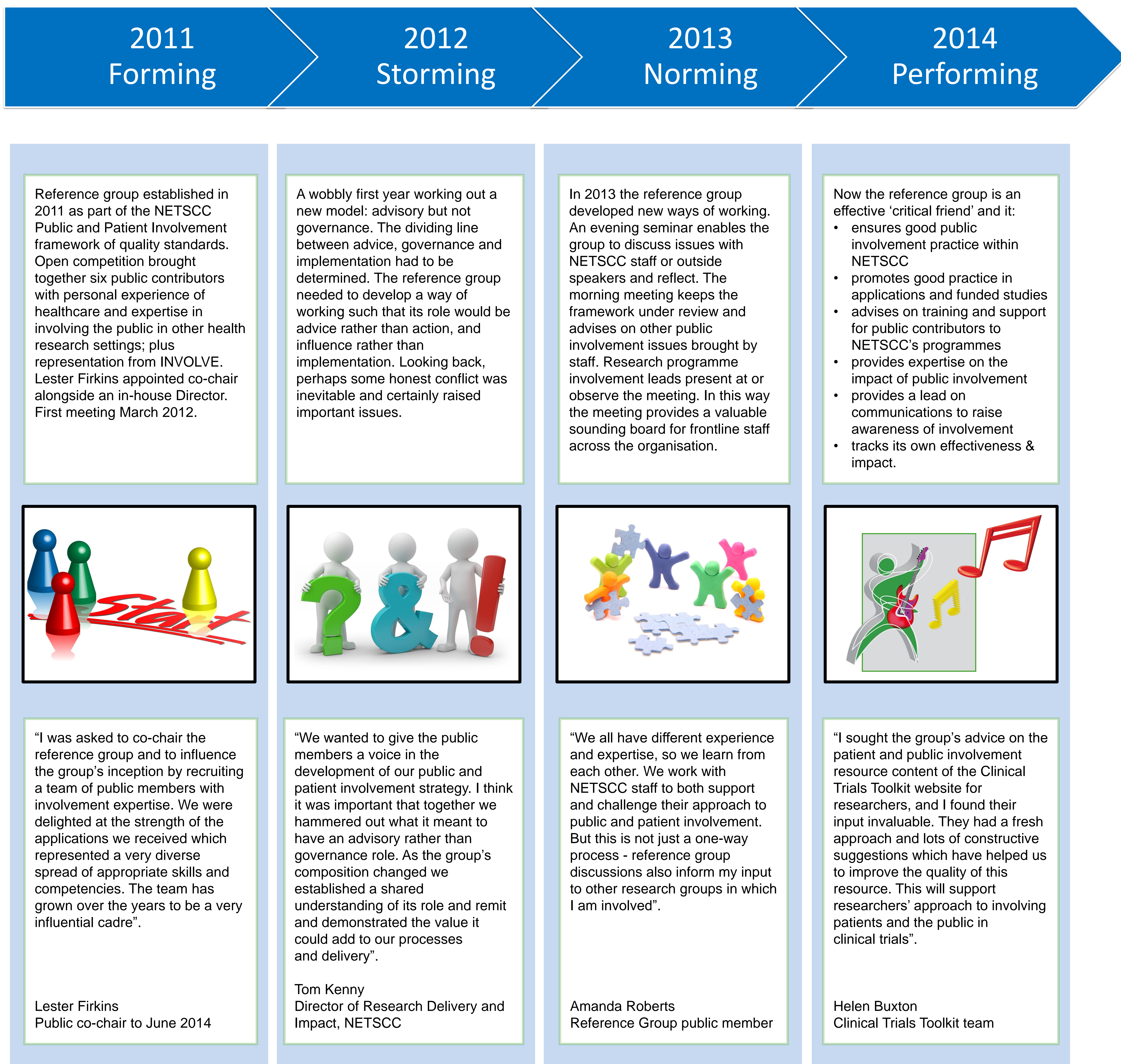


Forming, storming, norming and performing: developing an external Public and Patient Involvement reference group

A Public and Patient Involvement reference group advises the NIHR Evaluation, Trials and Studies Coordinating Centre (NETSCC) on the development of effective ways of involving the public. NETSCC hosts five NIHR programmes which fund independent research for health and social care decision-makers, including patients and the public.



A critical friend to the organisation on public and patient involvement strategy

www.nets.nihr.ac.uk/ppi

netspipi@southampton.ac.uk

Authors: Alison Ford (NETSCC), Helen Payne (NETSCC), Amanda Roberts (public member)